

INSTALLATION NOTE:
WHEN MAKING CONNECTIONS, MAINTAIN ALL PHASE AND GROUND CLEARANCES FOR EQUIPMENT VOLTAGE CLASS AND USE CAUTION TO AVOID PLACING ANY INTENTIONAL STRAIN UPON ANY SWITCH OR FUSE TERMINAL. IT IS IMPORTANT THAT EACH CABLE-TERMINATION CONNECTOR BE FLAT AGAINST THE CORRESPONDING SWITCH OR FUSE TERMINAL PAD, WITH THE BOLT HOLES IN ALIGNMENT. DO NOT USE THE CONNECTING BOLTS TO PULL THE CABLES INTO ALIGNMENT. SECURE CABLES FIRMLY TO CABLE SUPPORT ANGLES WHERE FURNISHED.

NOTES:

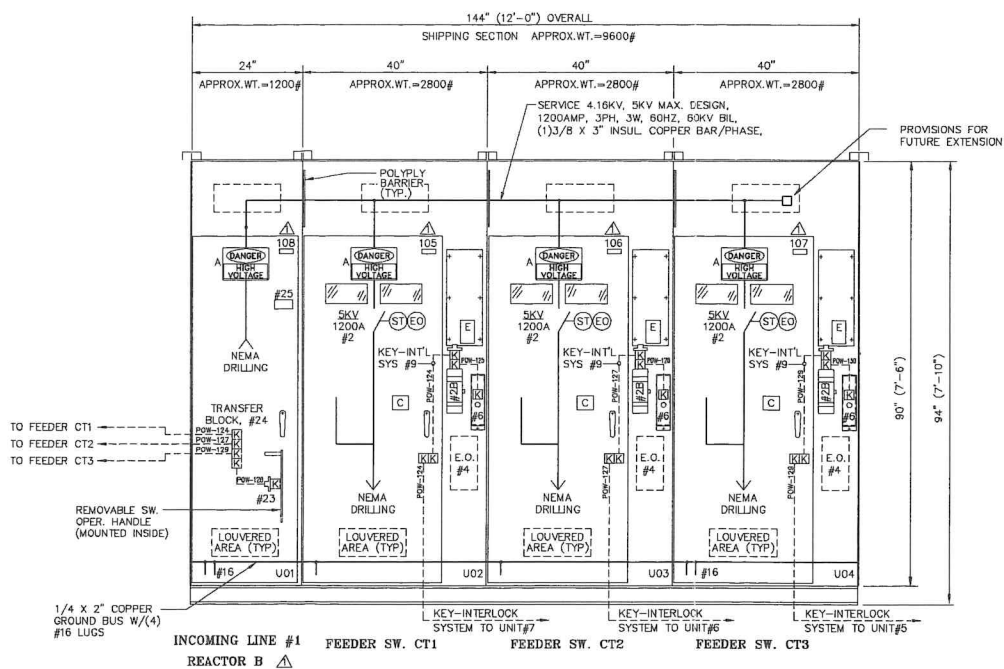
1. SWITCHGEAR CONSTRUCTION IN ACCORDANCE WITH POWERCON BULLETIN PC003D & ALL APPLICABLE ANSI, IEEE, NEC, NEMA, U.L. AND OSHA STANDARDS.
2. INDOOR NEMA 12 METAL ENCLOSED SWITCHGEAR, SERVICE 4.16KV, 5KV MAX. DESIGN, 1200AMP, 3PH, 3W, 60HZ, 60KV BIL.
3. INSULATED, SILVER PLATED COPPER CONDUCTORS.

SIGN DESIGNATIONS:

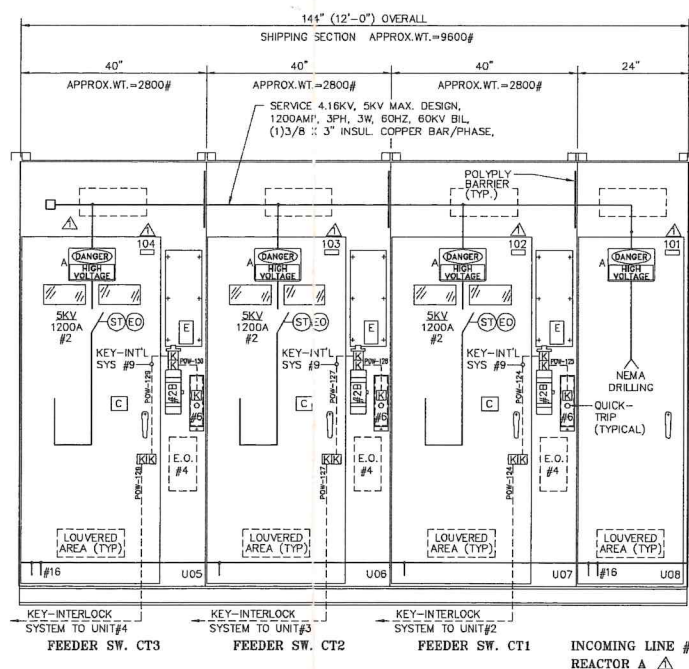
- A. DANGER - HIGH VOLTAGE - KEEP OUT
B. DANGER - HIGH VOLTAGE - QUALIFIED PERSONS ONLY
C. WARNING - SWITCH BLADES MAY BE ENERGIZED BY BACKFEED
D. WARNING - SAFETY VIEWING OPENINGS ARE PROVIDED...



FRONT DOOR DETAIL
UNITS #2,3,4,5,6,7



FRONT VIEW
5KV SUBSTATION B50-EF21-003A



REAR VIEW
5KV SUBSTATION B50-EF21-003B

REVISIONS REVISION TO SHOW CABLE ENTRY AVAILABLE AREA 5/20/00 G.M. REVISION KEY INTERLOCK BLOCK TO ADD TRANSFER BLOCK TO MANUAL HANDLE 5/20/00 J.S.R. PER AS BUILT & TESTED 07/15/00 C.L.O.	THIS DRAWING AND ALL PREVIOUS ISSUES ARE THE SOLE PROPERTY OF THE POWERCON CORPORATION OF SEVERN, MARYLAND. NEITHER RECEIPT OF SAID DRAWING, NOR POSSESSION THEREOF, IMPLIES OR TRANSFERS ANY RIGHTS OR LICENSE TO USE THE DRAWINGS, OR THE SUBJECT MATTER, DESIGN, OR TECHNICAL INFORMATION SHOWN THEREON, OR ANY RIGHT TO COPY OR OTHERWISE REPRODUCE THIS DRAWING OR ANY PART THEREOF. NEITHER THIS DRAWING NOR ANY INFORMATION CONTAINED THEREIN, MAY BE COPIED, REPRODUCED OR OTHERWISE USED WITHOUT FIRST OBTAINING WRITTEN AUTHORIZATION OF THE POWERCON CORPORATION. PRINTS ARE LOANED SUBJECT TO RETURN UPON DEMAND, AND THE EXPRESS CONDITION THAT THEY WILL NOT BE USED IN ANY WAY DETRIMENTAL TO THE POWERCON CORPORATION.	DESCRIPTION OF OPERATION PC003D SUMMARY S-15523 FRONT VIEW D-10122 SCHEMATIC CW-11981 WIRING DIAGRAM LATER	CUST. GENERAL ELECTRIC SUPPLY COMPANY P.O. NO. 495-100329AA ENGR. CHARLES T. LARSEN DATE 02/29/00 DRWN. CHARLES T. LARSEN DATE 02/29/00 CHKD. G. JAMES MUTH DATE 03/01/00 APPD. G. JAMES MUTH DATE 03/01/00 DATE WEB SITE: http://www.powerconcorp.com	Powercon Corp SEVERN, MD TITLE INDOOR NEMA-12 METAL-ENCLOSED SWITCHGEAR SERVICE 4.16KV, 5KV MAX. DESIGN, 1200AMP, 3PH, 3W, 60HZ, 60KV BIL. STATION BRANDY BRANCH CT PROJECT LOCATION JACKSONVILLE, FL SO#00-27971 D-10724 REV. 3
---	--	--	--	--